



June Bulletin 2026

Bansteadarea.u3asite.uk

Dear Members,

Be very careful what you wish for! In the May newsletter I said I hoped it would warm up a little!!!! — I would still like some rain, but please, not a monsoon!

We had a stunning month with all our varied events, ranging from science talks, big bands, to open gardens, Lullingstone Castle coach trip and a race night. One member even said she was going to put up a tent in the car park because she is here so often, adding that our u3a is “the best ever”! I must admit we are very lucky with our hall at such reasonable rates, and with all the work our team and helpers put in to make everything so successful.

Just a little fly in the ointment, we are a victim of our own success, our car park is getting very full when we run large daytime events, if at all possible, could I ask you to walk or car share to free up just a little more space, to fit in even more members, we now have over 900!

Can I also say a special thank you to Kerry and Anne who, with the help of all the volunteers, opened their beautiful gardens. Through the generosity of our members, they raised over £1,000 for their chosen charities. We also enjoyed all the fabulous homemade cakes.

June will be equally busy:

6th June – Windsor Flower Show coach trip

17th June – Open Meeting: ‘How the British Fell in Love with Tea’. Please stay afterwards and drink lots of tea!

22nd June – Coffee morning at the Park Life Café

27th June – Quiz Night

Please see the diary attached for all forward events we have planned so far.

Kind regards,
Jennifer Russell—Chair

Coach Trip - Winsor Flower Show, Saturday 6th June.

Four tickets have become available. If you are interested in going on this trip, please contact

[Kerry Garner](#)

Theatre Visit to Arcadia by Tom Stoppard , Wednesday 10th August

We have a few more tickets available for this show. Tickets are £55 for good Stalls seats . Contact [Ian Hack](#) as soon as you can if interested. “As a dazzling collision of science and romance, exploring the beauty of curiosity, the ache of lost knowledge and the timeless thrill of discovery.

In a country house, two centuries apart, genius, passion and discipline unfold. In 1809, teenage prodigy, Thomasina Coverly races ahead of her time – exploring mathematics, nature and the unpredictable forces that govern both the universe and the human heart.

In the present day, author Hannah Jarvis investigates a mysterious chapter in the life of Lord Byron with precision, patience and rigor, determined to resist the pull of romanticised myth.

As past and present intertwine, their questions begin to echo across time: can we ever truly understand the patterns of life or are we forever poised on the edge of disorder?” *‘Stoppard's Masterpiece makes a dazzling return to the stage’* (The Telegraph), opening at the **Duke of York's Theatre**, which is being newly renovated into the round especially for this production, from **20 June**, for a strictly limited 12-week run.

Group with Spaces - Dance2BFit

Easy-to-learn, fun, low-impact dance routines to music you will know and love.

Choreographed routines to all types of music so there really is something for everyone. Also included is a short muscle-strengthening routine with light hand weights which are provided. Come and join us – if you like music and dancing, you will really enjoy this class.

Venue is Banstead Methodist Church, The Drive. Banstead. SM7 1DA. Thursday Mornings from 10.00-11.00. The cost is £40 for a 10 week term.

If you are interested, contact [Lynn Tripp](#)

Save the Date!

Date	Event	Speaker	About
Saturday 6th June Leaving from Banstead Community Hall at 8.30am. Returning from Windsor at 3.30pm.	Outing - Coach trip to Windsor Flower Show	A one-day event celebrating nature, gardening, culinary arts and traditional crafts in Windsor Great Park.	Banstead u3a members only. Cost £35.00 per person includes return coach journey and entrance. Enjoy expert talks, live demos, garden displays and browse top quality plants from leading British Nurseries. Four tickets have become available. If interested email Kerry
Wednesday 17th June - 2.30pm (Doors open at 2.00pm)	Open Meeting - How the British fell in love with Tea	Simon Ritchie	The British have been drinking tea since the 17th century, in those days importing it from China at great expense. Banstead Area members free/ Guests £3.00. Pay on the door.
Monday 22nd June - 9.30am -10.30am 10.30am -12.00pm	New Members' Welcome Meeting. Members' coffee morning.	Venue: Park Life Cafe, Lady Neville Park.	Find out about, upcoming events, meetings, groups to join and how you can be involved. A social time to meet other members, and make new friends.
Saturday 27th June - 7.30pm (Doors open at 7.00pm)	Social Event - Quiz Night	Quizmaster Simon Edmands	Book a table for a team of 6, or book to join with others to make a team. Bring your own drinks and nibbles. Banstead u3a members £5.00/ guests £10.00. To book email Kerry
Wednesday 1st July - 2.30pm (Doors open at 2.00pm)	Joint Science Group - 'Optical illusions, art and the brain'	Dr. Mike Sheenan	u3a members £5.00/non-members £10.00. (includes Tea/Coffee). Pay on the door.
Friday 10th July - 7.30pm (Doors open at 7.00pm)	Social Event -Barn Dance	Band 'Doves Vagaris'	Come along and swing your partner and do-si-do. Bring your own drinks and nibbles. Banstead u3a members £5.00/guests £10.00. To book email Kerry
Wednesday 15th July - 2.30pm (Doors open at 2.00pm)	Open Meeting - Secrets of the Royal Court	Sarah Slater	Sarah's talk, on Britain's Royal Court from 1660 to 1830, will tell you the naughty bits of history you would probably not have learned about at school! Banstead Area members free/ Guests £3.00. Pay on the door.
Monday 27th July - 9.30am -10.30am 10.30am -12.00pm	New Members' Welcome Meeting. Members' coffee morning.	Venue: Park Life Cafe, Lady Neville Park.	Find out about, upcoming events, meetings, groups to join and how you can be involved. A social time to meet other members, and make new friends.
Wednesday 16th September - 2.30pm (Doors open at 2.00pm)	Membership Renewal / Groups Showcase / Recruitment Drive	No speaker	An opportunity to renew membership join the u3a and find out what groups and activities are available. No Speaker - our opportunity to showcase the branch and drive recruitment.
Thursday 17th September - Leaving from Banstead Community Hall	Coach trip to Eastbourne		Details to follow
Monday 28th September - 9.30am - 10.30am 10.30am -12.00pm	New Members' Welcome Meeting. Members' coffee morning.	Venue: Park Life Cafe, Lady Neville Park.	Find out about, upcoming events, meetings, groups to join and how you can be involved. A social time to meet other members, and make new friends.

Unless stated the venue is Banstead Community Hall, Park Road, SM7 3AJ. Free Parking.

Open Gardens Event—Sunday 17th May

Thank you to everyone who attended the Open Garden Event on Sunday 17th May and to all those who helped on the day, provided cakes and made donations to these two great causes.

The weather turned out to be dry with quite a lot of sunshine and everyone had a lovely time.

Pictures of Kerry's Garden below.



We raised the magnificent sum of £1,176.83 in total,
so £588.41 went to each charity:
Re-Think and Princess Alice Hospice.

Thank you to everyone for your generosity.

Pictures of Anne and John's Garden below

This certificate is proudly presented to

U3A Banstead

For raising an incredible £588.41 in
support of Rethink Mental Illness



Mark Winstanley (CEO)

Garden Fundraiser 2026

Registered with
FUNDRAISING
REGULATOR

Rethink
Mental
Illness



----- COACH TRIP -----

ROYAL WINDSOR FLOWER SHOW SATURDAY 6TH JUNE

Whether you're a seasoned gardener or just starting out, the Royal Windsor Flower Show is full of inspiration. Enjoy expert talks, live demos, garden displays and browse top-quality plants from leading British nurseries.



Boarding the coach from Banstead Community Hall at 8.30am, returning from Windsor at 3.30pm.

£35 per person includes coach travel and entrance.

To book contact Kerry at u3a.banstead.mark@gmail.com

u3a

A MEMBER'S DAY OUT BY COACH

How the British fell in love with tea

Wednesday 17th June
2.30pm (doors open at 2pm)
Banstead Community Hall
Park Road SM7 3AJ
Free on-site parking

Free for Banstead Area u3a members
£3 non-members. Includes tea/coffee
<https://bansteadarea.u3asite.uk/>

The British have been drinking tea since the 17th century, in those days importing it from China at great expense. Later, the East India Company decided to create their own tea industry in India, but they had no suitable tea plants and didn't know how to turn the raw plants into tea. What followed is a tale of drug pushing, industrial espionage, smuggling and good old British incompetence.

TALK by Simon Ritchie



u3a
learn, laugh, live

OPEN MEETING

Saturday 27th June

7.30pm – doors open at 7pm

Banstead Community Hall, Park Road

Quiz Night



Simon Edmands is our Quiz master

**Book a table for your team of six, or
book to join up with others and make a team.
Bring your own glasses, drinks and nibbles.**



u3a Banstead members £5 Non-members £10

**To book contact Kerry via
u3a.banstead.mark@gmail.com**

Optical illusions, art and the brain

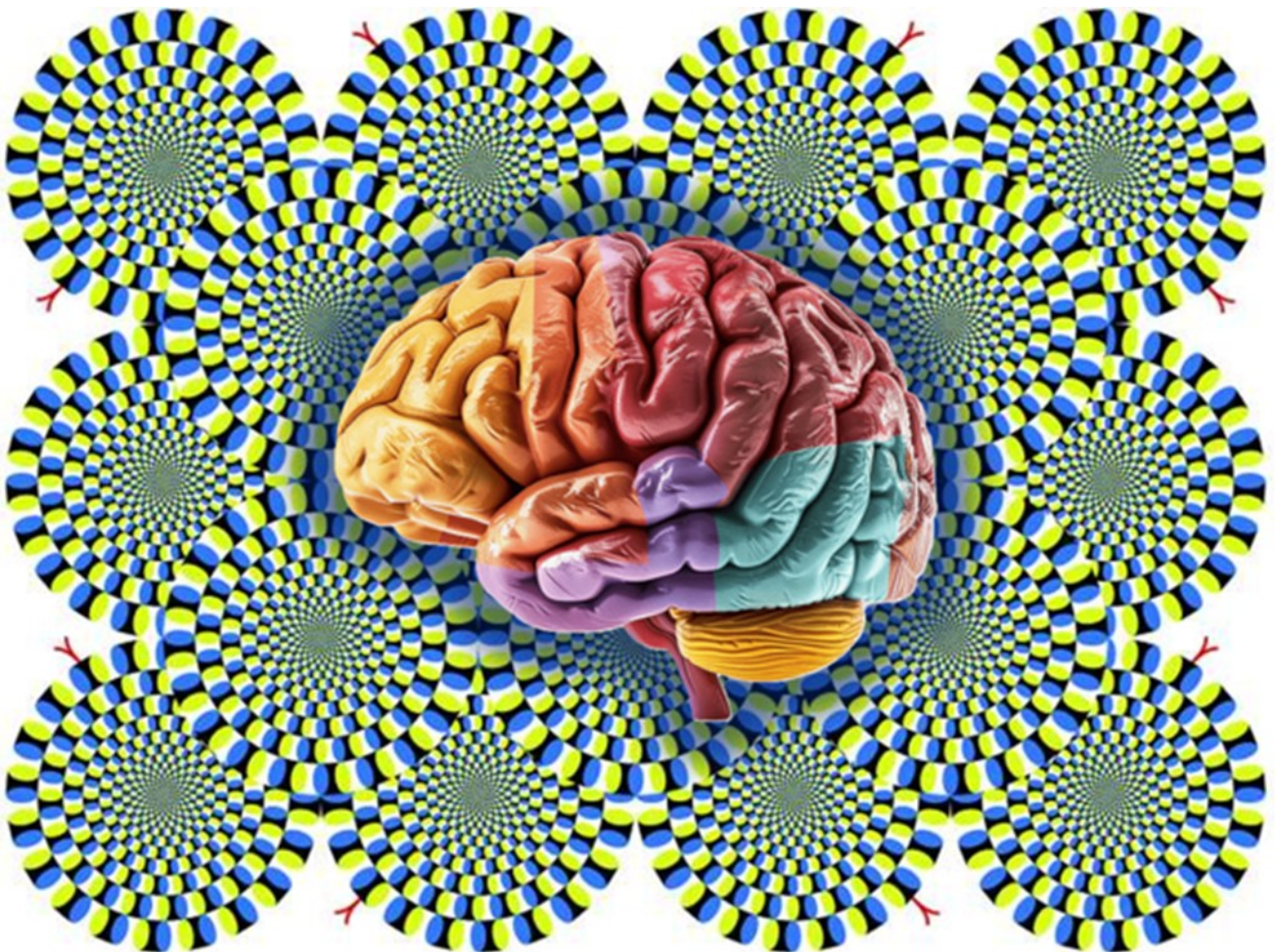
Dr. Mike Sheenan

Presented by Banstead, Epsom & Ewell and Sutton u3a Science Group

Wednesday 1st July 2026, 2:30pm (doors open at 2pm)

Banstead Community Hall, Park Road SM7 3AJ

Free on-site parking



u3a learn,
laugh,
live

BARN DANCE

FRIDAY 10 JULY AT 7.30PM

Come along
and do-si-do
to the band
Doves Vagaries



Bring your
own drinks
and nibbles



U3a Banstead Members £5 - Non Members £10

Email Kerry to book - u3a.banstead.mark@gmail.com

Banstead Community Hall, Park Road SM7 3AJ

Secrets of the Royal Court

Her talk, on Britain's Royal Court from 1660 to 1830, tells the tales of all the naughty bits of history you would probably not have learned about at school!

Wednesday 15th July
2.30pm (doors open at 2pm)
Banstead Community Hall
Park Road SM7 3AJ
Free on-site parking

Free for
Banstead Area u3a members
£3 non-members.
Includes tea/coffee
<https://bansteadarea.u3asite.uk/>



TALK by Sarah Slater



OPEN MEETING